

CM15-2 A-R-A-E-AQQE F-A-A-N

Grundfos pump 97507759





Thank you for your interest in our products. Please contact us for more information, or visit our website

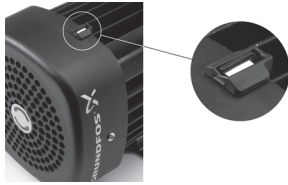
<https://www.lenntech.com/grundfos/CMBASIS/97507759/CM15-2-A-R-A-E-AQQE.html>

info@lenntech.com

tel. +31 152 610 900

fax. +31 152 616 289

Position	Qty.	Description
	1	<p>CM15-2 A-R-A-E-AQQE</p>  <p>Product No.: On request</p> <p>Compact, reliable, horizontal, multistage, end-suction centrifugal pump with axial suction port and radial discharge port. The shaft, impellers and chambers are made of stainless steel. The inlet and discharge parts are made of cast iron. The mechanical shaft seal is a special designed, unbalanced O-ring seal. Pipework connection is via internal Whitworth pipe threads, Rp (ISO 7/1).</p> <p>The pump is fitted with a 3-phase, foot-mounted, fan-cooled asynchronous motor.</p> <p>Further product details</p> <p>Pump and motor are integrated in a compact and user-friendly design. The pump is fitted to a low base plate, making it ideal for installation in systems where compactness is important.</p> <p>The state-of-the-art design and materials of the shaft seal ensure high wear resistance, improved sticking and dry-running capabilities and long operating life.</p> <p>Servicing the pump requires no special service tools. Service parts are in stock for quick delivery and are available as kits, single parts or bulk. Service videos are available on www.youtube.com.</p> <p>Pump</p> <p>A combination of a stop ring and a Nord-lock® washer secures a tight and reliable fixation of the impeller spacing pipes to the splined pump shaft. It is possible to remove and fit the hydraulic parts from the pump side. The inlet part, chambers and discharge part are hold together by four staybolts.</p> <p>The pump is fitted with an unbalanced O-ring seal with a rigid torque-transmission system. It has a fixed seal driver ensuring a reliable rotation of all parts. The dynamic secondary seal is an O-ring.</p> <p>Primary seal:</p> <ul style="list-style-type: none"> Rotating seal ring material: silicon carbide (SiC) Stationary seat material: silicon carbide (SiC) <p>This material pairing is used where higher corrosion resistance is required. The high hardness of this material pairing offers good resistance against abrasive particles.</p> <p>Secondary seal material: EPDM (ethylene-propylene rubber)</p> <p>EPDM has excellent resistance to hot water. EPDM is not suitable for mineral oils.</p>  <p>The pump shaft is connected to the motor shaft through a left thread and tight fit. The shaft cannot be dismantled.</p> <p>Motor</p> <p>The motor is a totally enclosed, fan-cooled motor with principal dimensions to EN 50347. Electrical tolerances comply with EN 60034.</p> <p>The motor efficiency is classified as IE2 in accordance with IEC 60034-30.</p> <p>The motor does not incorporate motor protection and must be connected to a motor-protective circuit breaker which can be manually reset. The motor-protective circuit breaker must be set according to the rated current of the motor (I1/1).</p> <p>An installation indicator is fitted to the motor fan cover. Based on the motor cooling air, it indicates the direction of rotation of the motor. The motor is fitted with a directional sticker.</p>



The motor can be connected to a variable speed drive for adjustment of pump performance to any duty point. Grundfos CUE offers a range of variable speed drives. Please find more information in Grundfos Product Center.

Technical data

Liquid:

Pumped liquid: Water
 Liquid temperature range: -20 .. 90 °C
 Liquid temperature during operation: 20 °C
 Density: 998.2 kg/m³

Technical:

Rated flow: 17 m³/h
 Rated head: 29.7 m
 Primary shaft seal: AQQE
 Approvals on nameplate: CE,WRAS,ACS,TR,EAC
 Curve tolerance: ISO9906:2012 3B

Materials:

Pump housing: Cast iron
 EN-JL1030
 ASTM 30 B
 Impeller: Stainless steel
 DIN W.-Nr. 1.4301
 AISI 304
 Rubber: EPDM

Installation:

Maximum ambient temperature: 55 °C
 Maximum operating pressure: 10 bar
 Max pressure at stated temp: 10 bar / 90 °C
 Flange standard: WHITWORTH THREAD RP
 Pump inlet: Rp 2
 Pump outlet: Rp 2

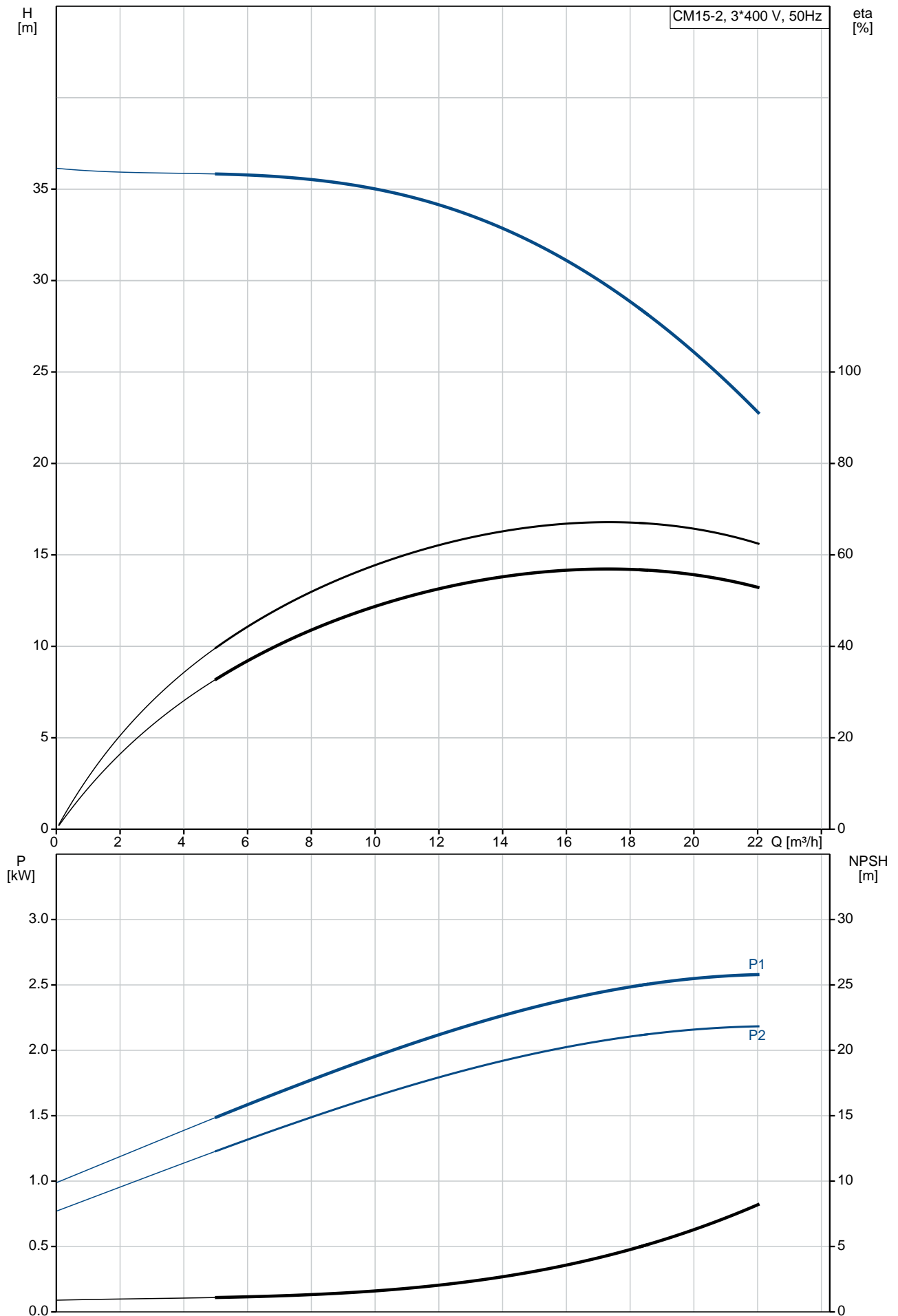
Electrical data:

Motor type: 90SC
 IE Efficiency class: IE2
 Rated power - P2: 2.2 kW
 Mains frequency: 50 Hz
 Rated voltage: 3 x 220-240D/380-415Y V
 Service factor: 1
 Rated current: 8,15-7,85/4,7-4,5 A
 Starting current: 890-1020 %
 Rated speed: 2880-2910 rpm
 Motor efficiency at full load: 83.2 %
 Enclosure class (IEC 34-5): IP55
 Insulation class (IEC 85): F

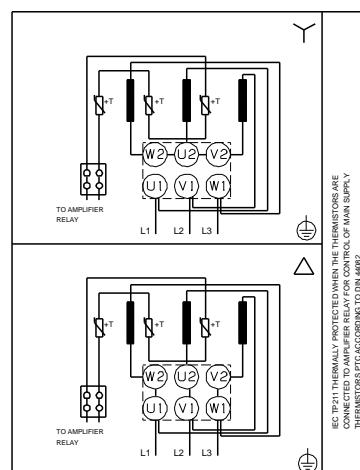
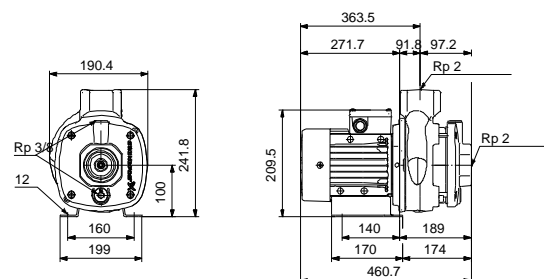
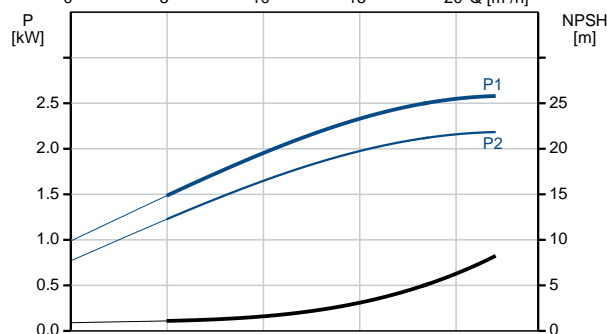
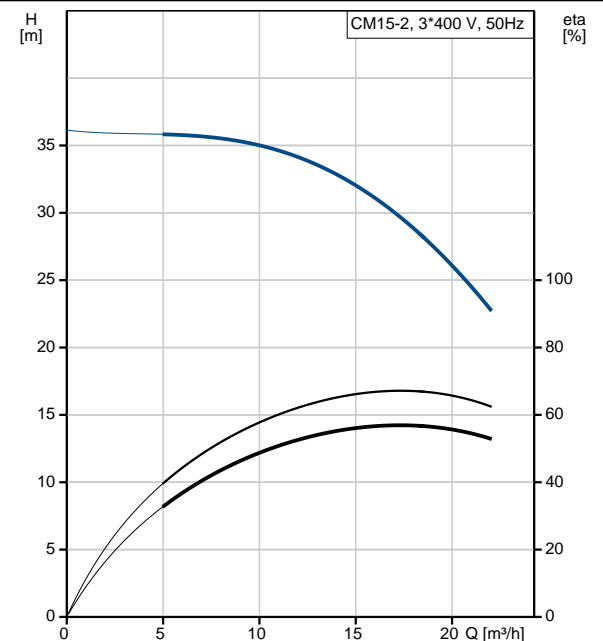
Others:

Minimum efficiency index, MEI : 0.7
 Net weight: 34.5 kg
 Gross weight: 37 kg

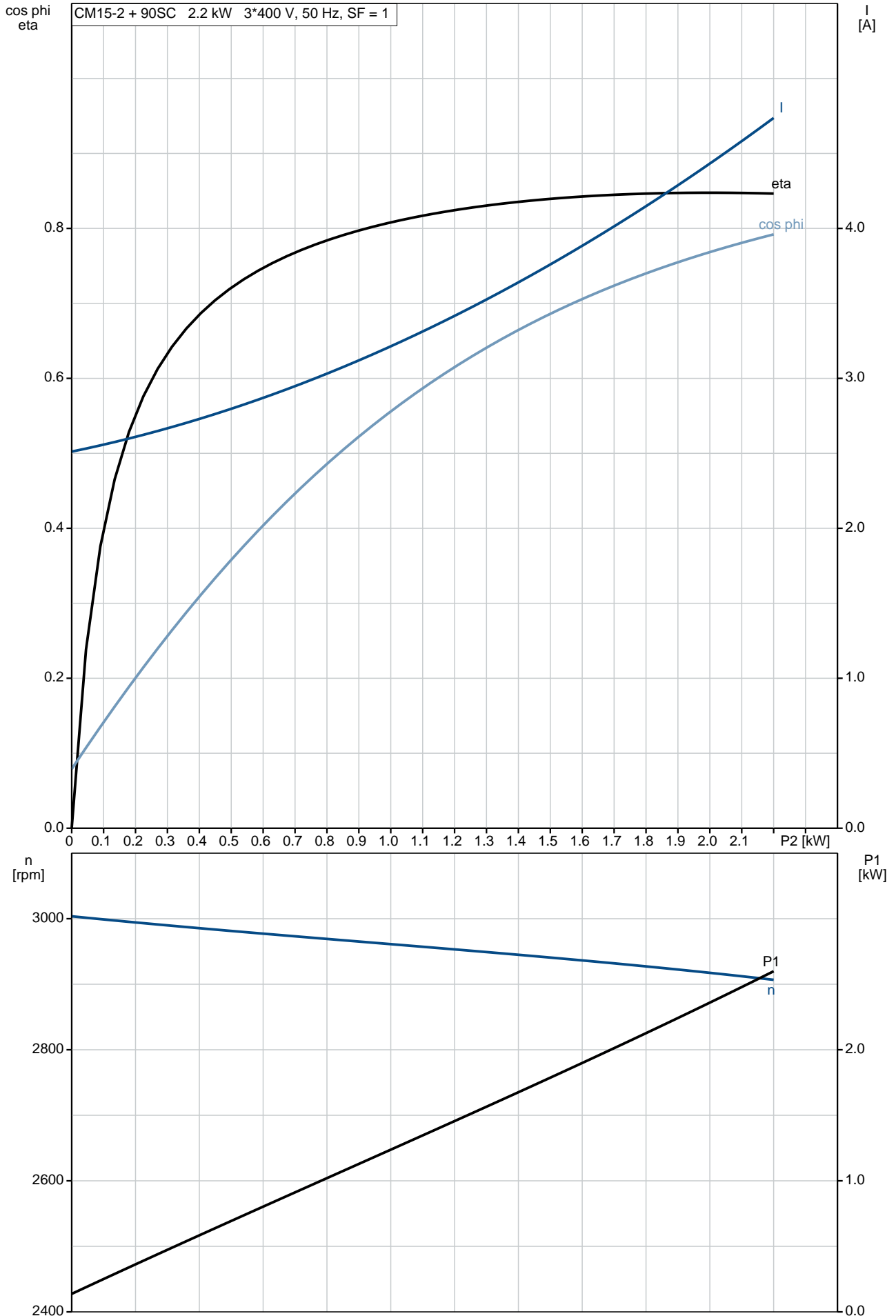
On request CM15-2 A-R-A-E-AQQE 50 Hz



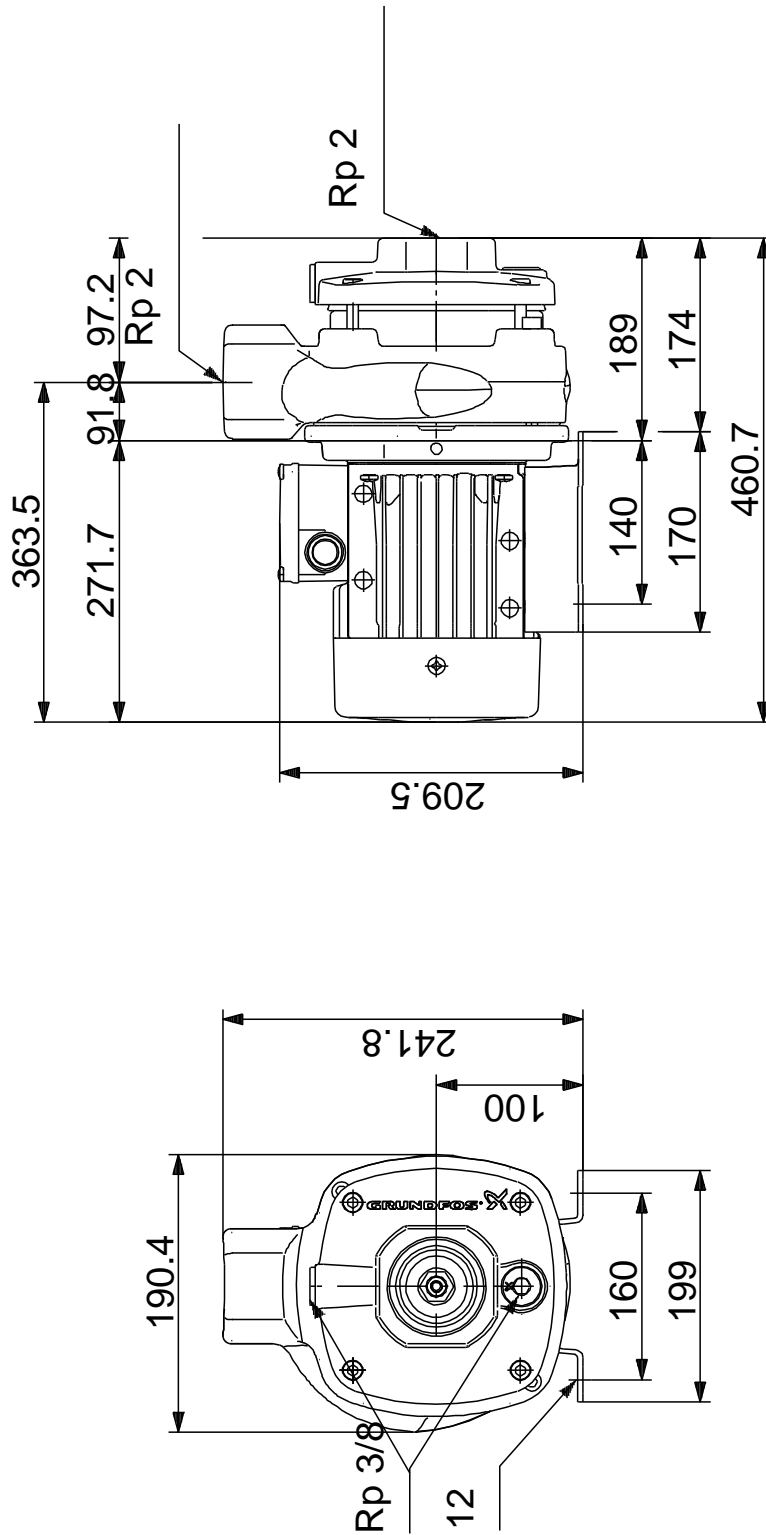
Description	Value
General information:	
Product name:	CM15-2 A-R-A-E-AQQE
Product No:	On request
EAN number:	On request
Technical:	
Rated flow:	17 m³/h
Rated head:	29.7 m
Impellers:	2
Primary shaft seal:	AQQE
Approvals on nameplate:	CE, WRAS, ACS, TR, EAC
Curve tolerance:	ISO9906:2012 3B
Pump version:	A
Model:	A
Materials:	
Pump housing:	Cast iron
	EN-JL1030
	ASTM 30 B
Impeller:	Stainless steel
	DIN W.-Nr. 1.4301
	AISI 304
Material code:	A
Rubber:	EPDM
Code for rubber:	E
Installation:	
Maximum ambient temperature:	55 °C
Maximum operating pressure:	10 bar
Max pressure at stated temp:	10 bar / 90 °C
Flange standard:	WHITWORTH THREAD RP
Pump inlet:	Rp 2
Pump outlet:	Rp 2
Connect code:	R
Liquid:	
Pumped liquid:	Water
Liquid temperature range:	-20 .. 90 °C
Liquid temperature during operation:	20 °C
Density:	998.2 kg/m³
Electrical data:	
Motor type:	90SC
IE Efficiency class:	IE2
Rated power - P2:	2.2 kW
Mains frequency:	50 Hz
Rated voltage:	3 x 220-240D/380-415Y V
Service factor:	1
Rated current:	8,15-7,85/4,7-4,5 A
Starting current:	890-1020 %
Rated speed:	2880-2910 rpm
Motor efficiency at full load:	83.2 %
Enclosure class (IEC 34-5):	IP55
Insulation class (IEC 85):	F
Motor protec:	NO
Others:	
Minimum efficiency index, MEI :	0.7
Net weight:	34.5 kg
Gross weight:	37 kg



On request CM15-2 A-R-A-E-AQQE 50 Hz

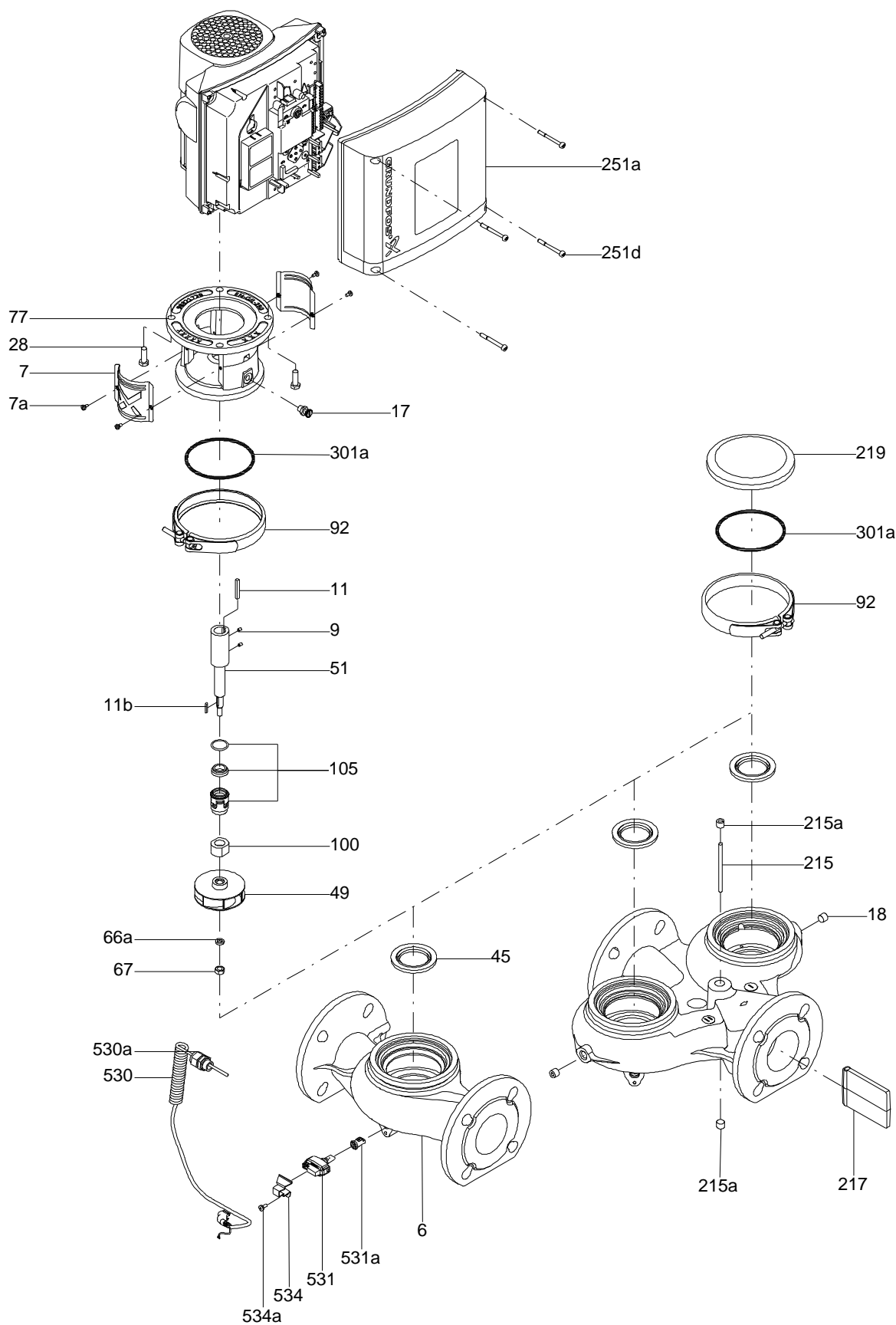


On request CM15-2 A-R-A-E-AQQE 50 Hz

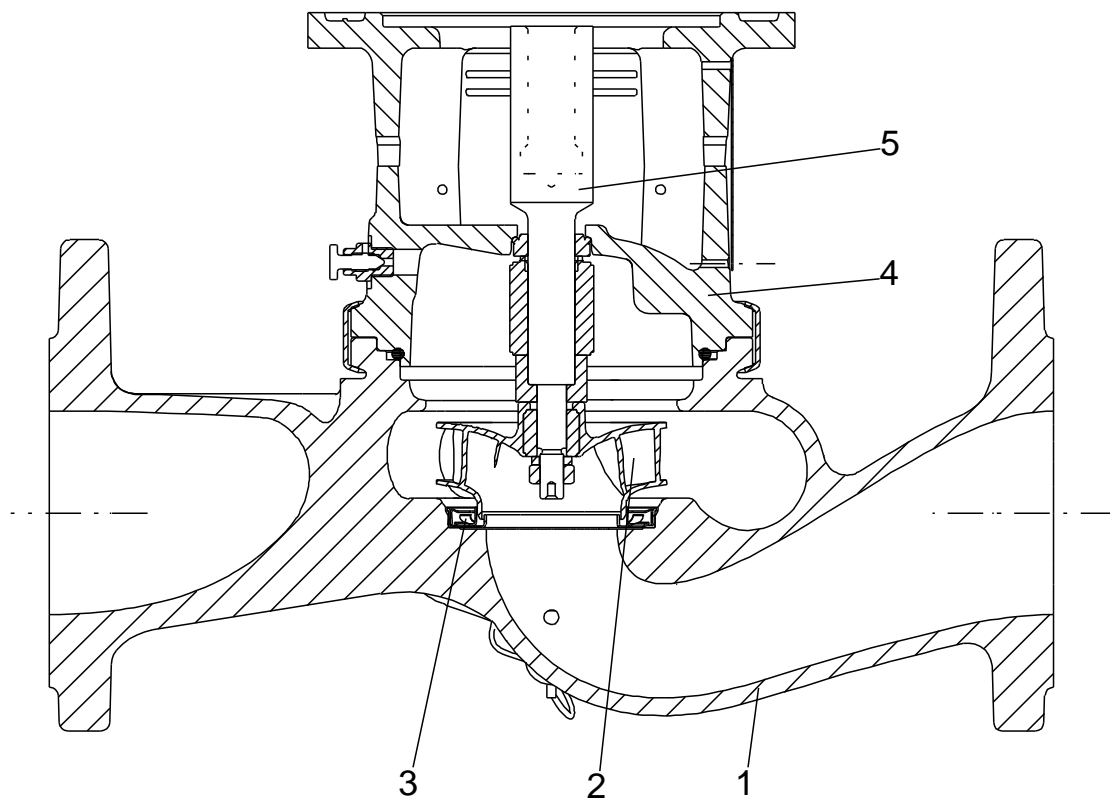


Note! All units are in [mm] unless others are stated.
Disclaimer: This simplified dimensional drawing does not show all details.

Exploded view

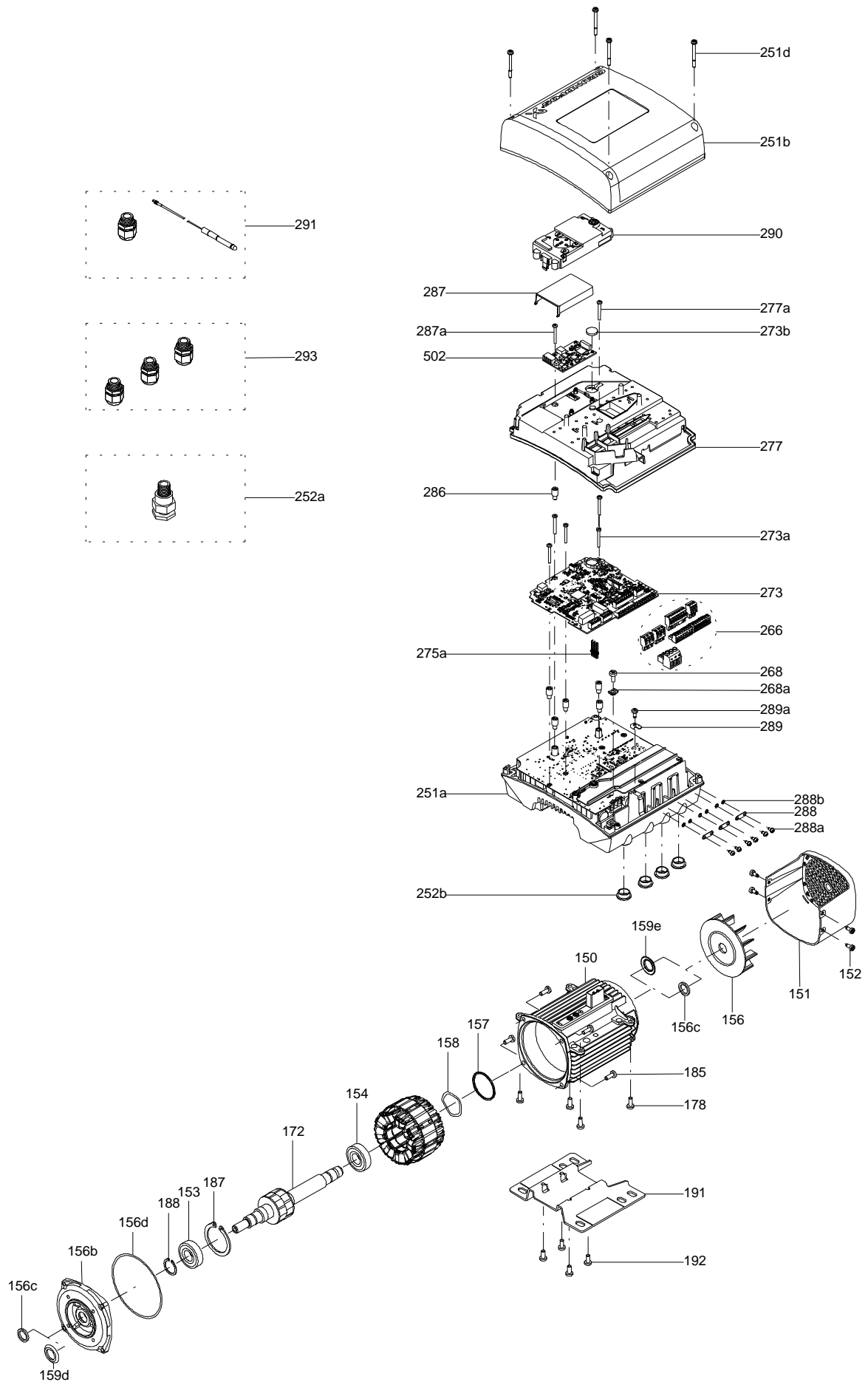


Sectional drawing (TM058200 for TPE2,TPE3)



TM058200

Exploded view (TM057026 for MGE model H/I)



Parts list CM15-2, Product No. On request
Valid from 15.6.2011 (1124)

Pos	Description	Annotation	Données de classification	Référence	Quantité	Unité
	MG90SC				1	pcs
	Cross recess countersunk screw				4	pcs
2	Discharge				1	pcs
- 4	Chamber				1	pcs
	Retainer for seal ring				1	
	Guide vane				10	
	Front plate				1	
3a	Intermediate chamber				1	
45	Seal ring				1	
65	Neck ring retainer				1	
- 6	Inlet part cpl.				1	pcs
6	Inlet part				1	
45	Seal ring				1	
65	Neck ring retainer				1	
- 25	Drain plug cpl.				2	pcs
11	O-ring		Diameter: 18,5		1	
			Material type: EPDM			
			Thickness: 2			
25	Plug				1	
26	Hex socket head cap screw		Length (mm): 40		4	pcs
			Thread: M08			
26	Hex socket head cap screw		Length (mm): 80		2	pcs
			Thread: M8			
36	Lock nut		Thread: M8		1	pcs
49	Impeller cpl.				2	pcs
51	Pump shaft		Diameter: D16		1	pcs
64	Spacing pipe				1	pcs
64.a	Spacing pipe				1	pcs
64.c	Clamp				1	pcs
66	Wedge lock washer				1	pcs
76	Nameplate				2	pcs
- 105	Shaft seal				1	pcs
102	O-ring		Diameter: 22,00		1	
			Material type: EPDM			
			Thickness: 2,75			
103	Seal ring, stationary				1	
104	Seal ring, rotating				1	
107	O-ring		Diameter: 15.5		1	
			Material type: EPDM			
			Thickness: 3.18			
108	Compression spring				1	
111	Retainer				1	
112	Driver for shaft seal				1	
111.a	Stop ring				1	pcs
139.b	Gasket		Internal diameter: D139		1	pcs
			Outer diameter: D146,5			
139.c	Gasket				1	pcs
151	Fan cover				1	pcs
151.a	Installation indicator				1	pcs
152	Pan head thread forming screw				4	pcs
156	Fan				1	pcs
191	Foot				1	pcs

Disclaimer: The information about the Grundfos pump in this document may be outdated.

Data may be subject to alterations without further notice.

Please contact us to verify the data above is still accurate/up-to-date.

All information is copyright Grundfos.



info@lenntech.com

<https://www.lenntech.com>

tel. +31 152 610 900

fax. +31 152 616 289